



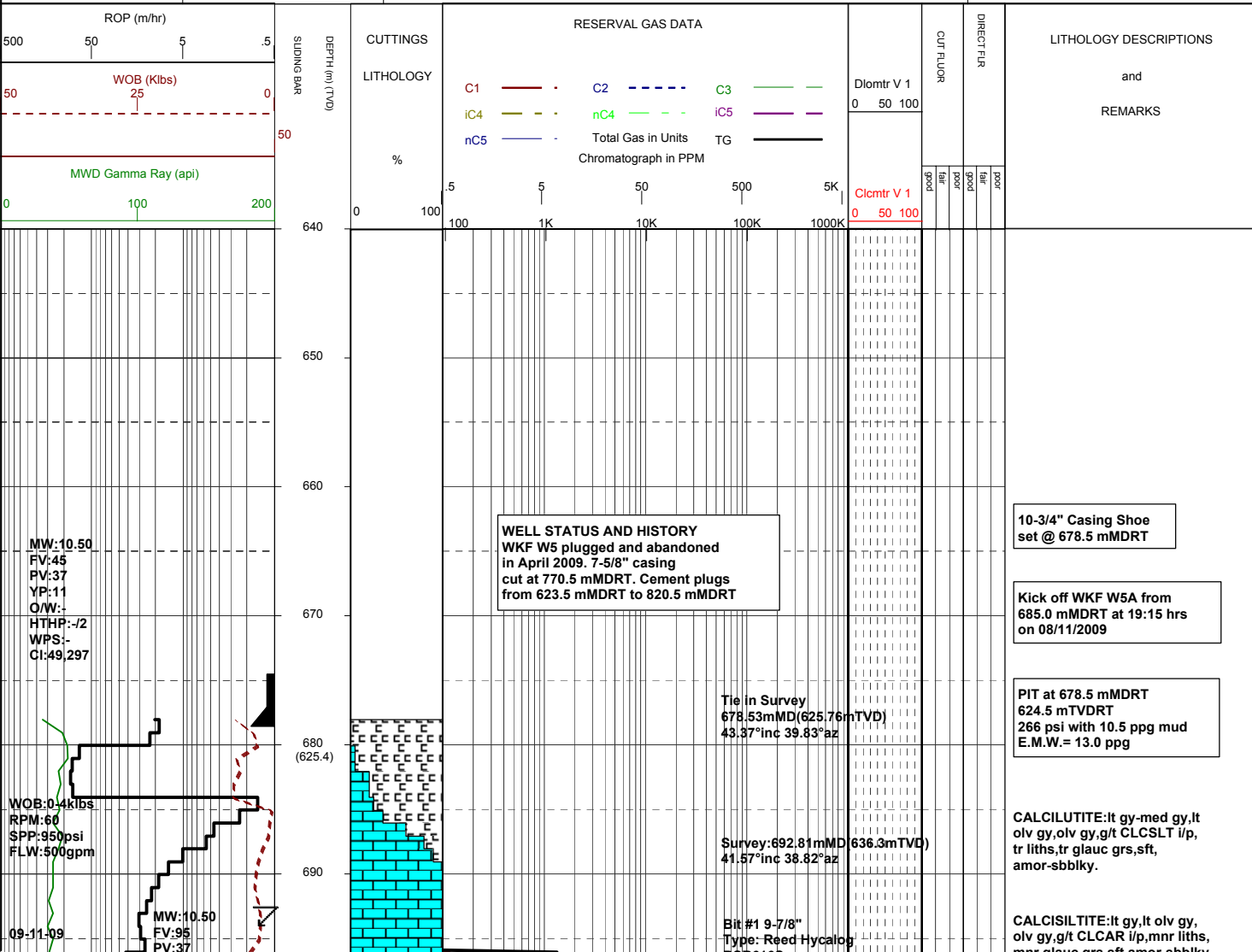
# MASTERLOG

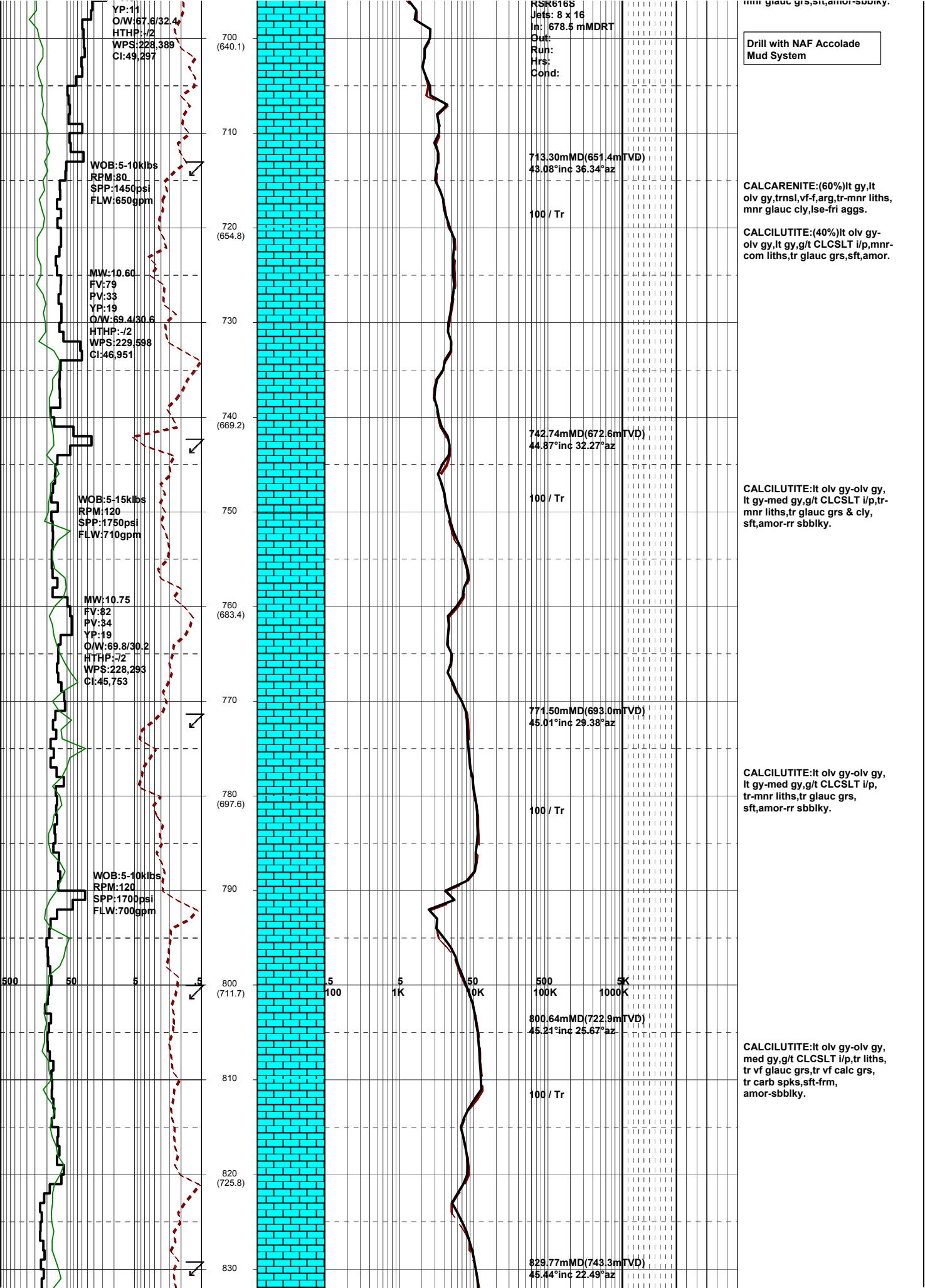
## WKF W5A

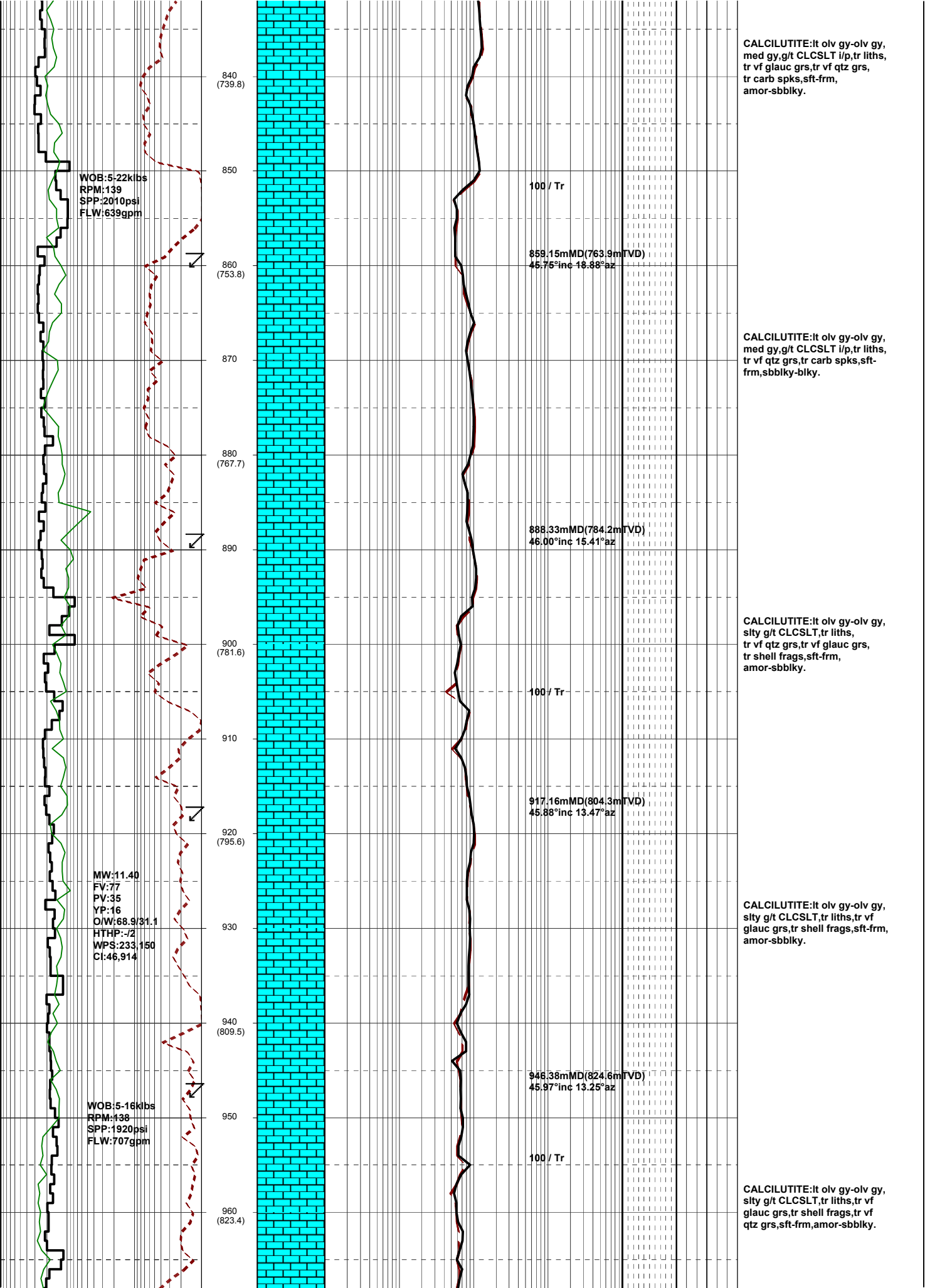


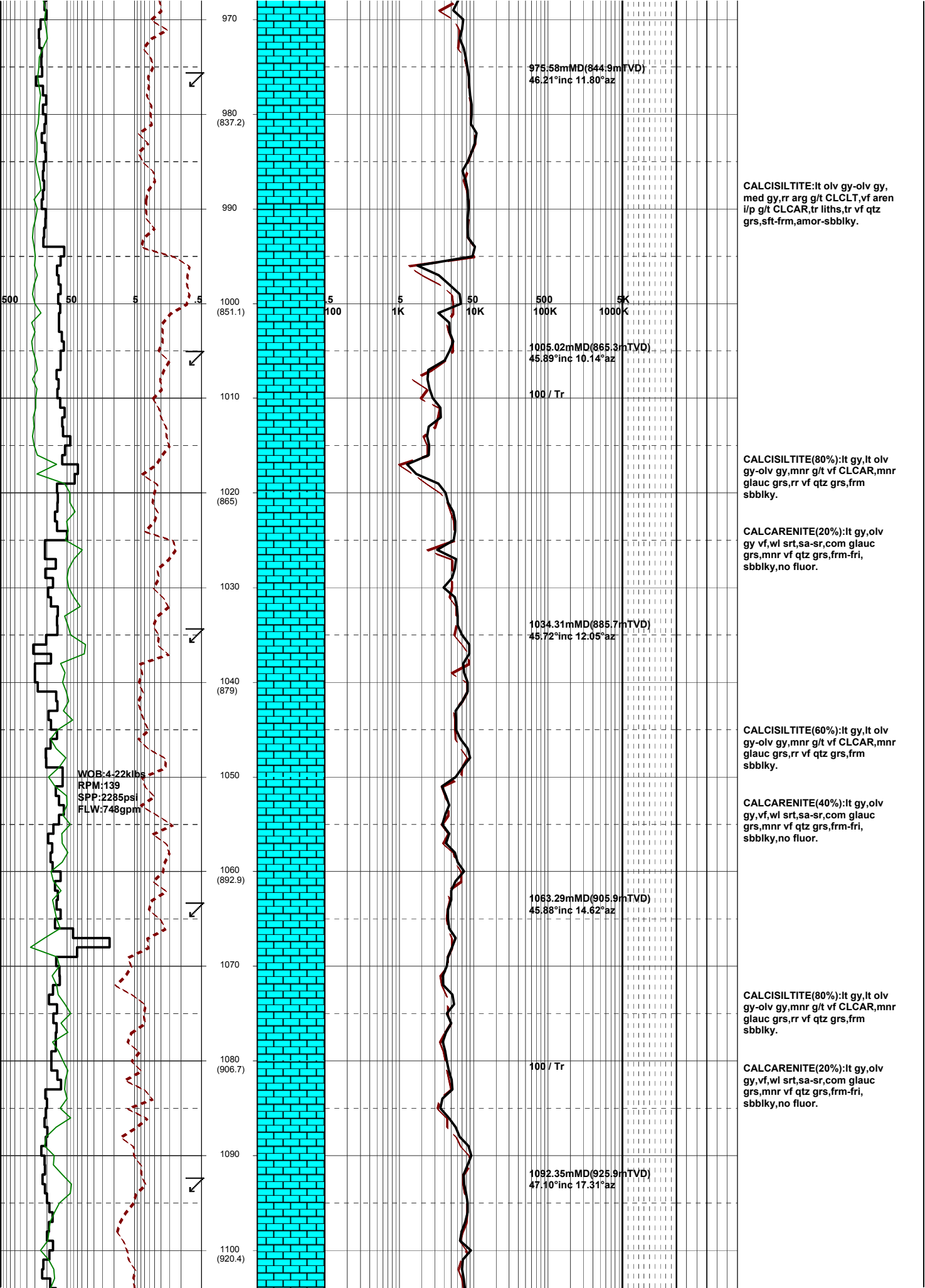
GENERAL	SURFACE POSITION	HOLE / CASING INFO	DATE / DEPTH	ENGINEERS
Country : AUSTRALIA	Longitude : E 148 06 19.676		Kick off Date: 08/11/2009	Gareth Munro
Permit : VIC L7	Latitude : S 38 35 34.704	9-7/8" Hole to	Total Depth Date:	Dan Dennis
Field : Kingfish	MGA Co-ord X :596271.558mE		Total Depth:	Colin Chadwick
Basin : GIPPSLAND	MGA Co-ord Y : 5727810.660 mN	10-3/4" Surface Csg at 678.5 mMDRT	True Vertical Depth:	Mark Smith
Well Type :DEVELOPMENT	RT to MSL : 41.73 m	7" Production Csg at	Log Scale : 1/ 500	Adam Sullivan
Rig Name : Nabors 175	RT to Sea Bed : 118.73 m			Kepa O'Reilly

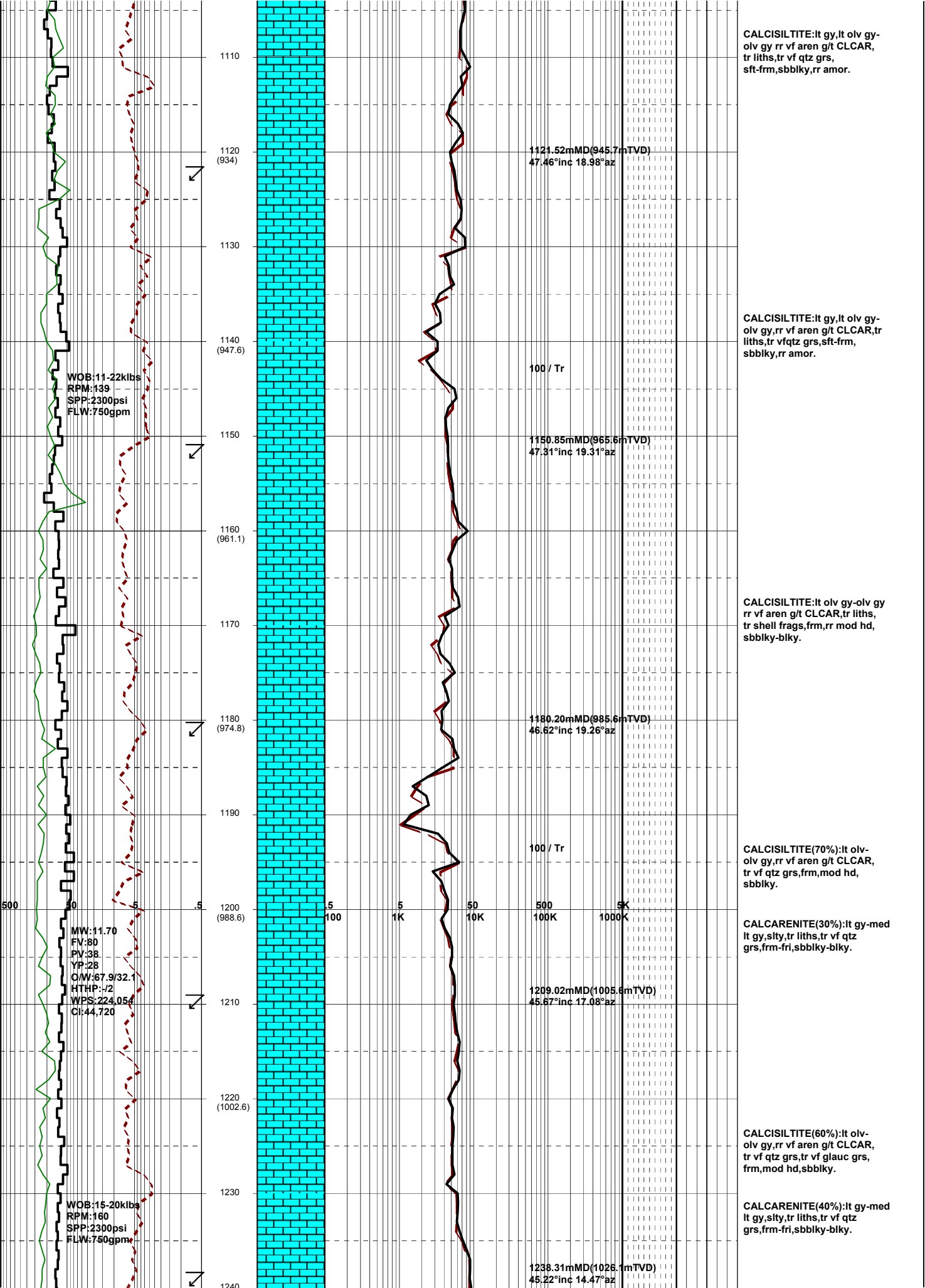
ABBREVIATIONS		LITHOLOGY LEGEND				ENGINEERING LEGEND			
MW	Mud Weight	WOB	Weight on Bit (klbs)	Claystone	Marl	Bryozoa	Glauconite	Casing shoe	Sidewall core
FV	Funnel Viscosity	RPM	Rotations Per Min	Siltstone	Limestone	Radiolariae	Pyrite	Casing top	Core
PV	Plastic Viscosity	FLW	Flow Rate (gpm)	Sandstone	Dolomite	Echinoids		Survey	Mud gain
YP	Yield Point	SPP	Pump Pressure (psi)	Shale	Coal-lignite	Foraminiferae		MDT	Mud loss
O/W	Oil/Water Ratio	RR	Re-Run Bit	Conglomerate	Volcanics	Cement		Sliding bar	
WPS	Aq. Phase Salinity	TG	Trip Gas						
HPHT	Fluid Loss	CG	Connection Gas						
Cl	Chlorides	BG	Background Gas						
Incl	Inclination	DGP	Drilled Gas Peak						
Az	Azimuth	MM	Mud Motor						











CALCISILTITE:lt gy,lt olv gy-olv gy,rr vf aren g/t CLCAR, tr liths,tr vf qtz grs, sft frm,sbbiky,rr amor.

1121.52mMD(945.7mTVD)  
47.46°inc 18.98°az

CALCISILTITE:lt gy,lt olv gy-olv gy,rr vf aren g/t CLCAR, tr liths,tr vf qtz grs,sft frm,sbbiky,rr amor.

100 / Tr

1150.85mMD(965.6mTVD)  
47.31°inc 19.31°az

CALCISILTITE:lt olv gy-olv gy,rr vf aren g/t CLCAR,rr liths, tr shell frags,frm,rr mod hd, sbbiky-biky.

1180.20mMD(985.6mTVD)  
46.62°inc 19.26°az

100 / Tr

CALCISILTITE(70%):lt olv-olv gy,rr vf aren g/t CLCAR, tr vf qtz grs,frm,mod hd, sbbiky.

CALCARENITE(30%):lt gy-med lt gy,sly,tr liths,tr vf qtz grs,frm-fri,sbbiky-biky.

1209.02mMD(1005.6mTVD)  
45.67°inc 17.08°az

CALCISILTITE(60%):lt olv-olv gy,rr vf aren g/t CLCAR, tr vf qtz grs,tr vf glauc grs, frm,mod hd,sbbiky.

CALCARENITE(40%):lt gy-med lt gy,sly,tr liths,tr vf qtz grs,frm-fri,sbbiky-biky.

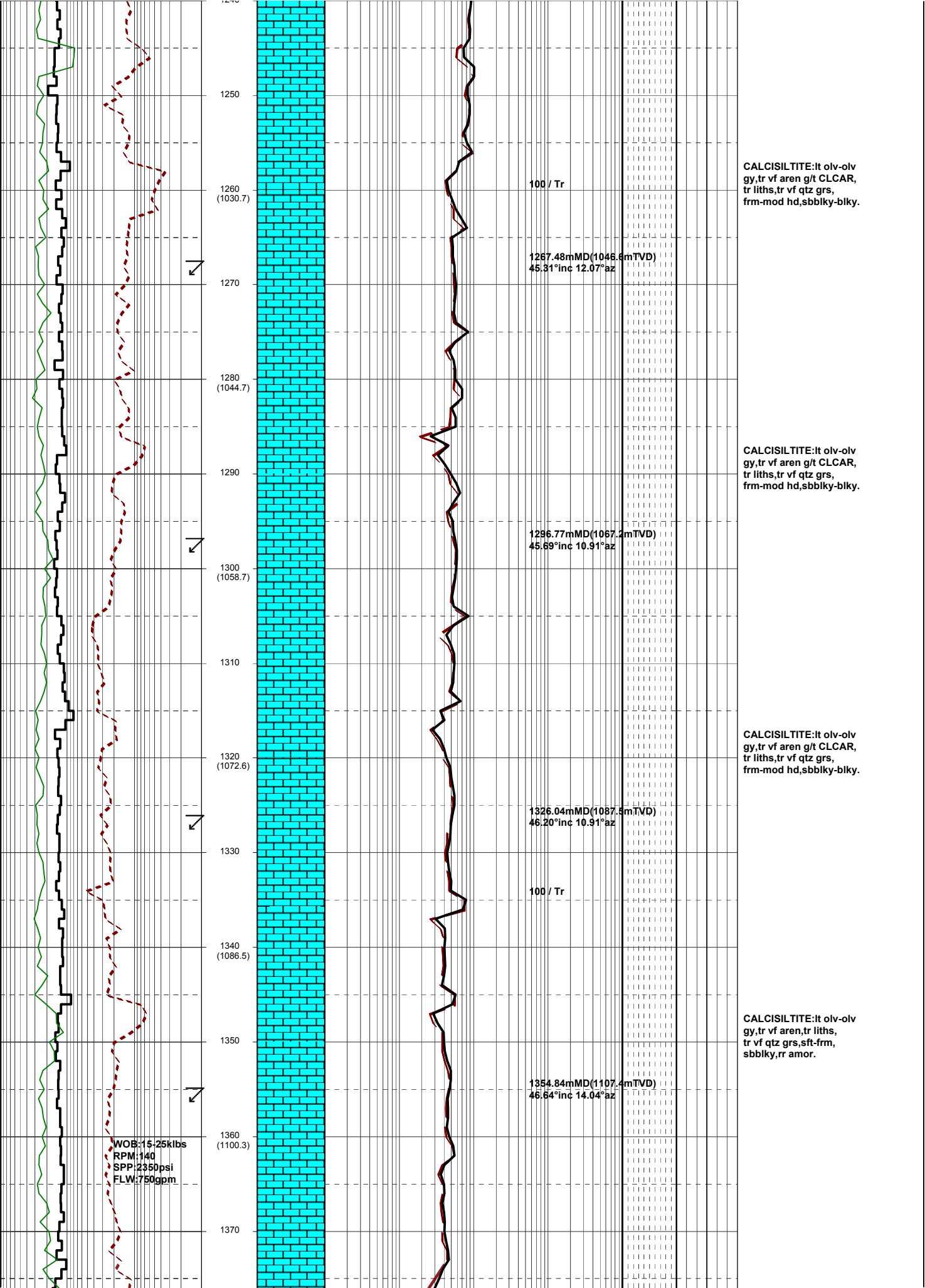
1238.31mMD(1028.1mTVD)  
45.22°inc 14.47°az

WOB:11-22klbs  
RPM:139  
SPP:2300psi  
FLW:750gpm

MW:11.70  
FV:80  
PV:38  
YP:28  
O/W:67.9/32.1  
HTHP:1/2  
WPS:224,054  
CI:44,720

WOB:15-20klbs  
RPM:160  
SPP:2300psi  
FLW:750gpm

500 100 5 1K 50 10K 500 1000K



1250  
1260 (1030.7)  
1270  
1280 (1044.7)  
1290  
1300 (1058.7)  
1310  
1320 (1072.6)  
1330  
1340 (1086.5)  
1350  
1360 (1100.3)  
1370

WOB: 15-25kibs  
RPM: 140  
SPP: 2350psi  
FLW: 750gpm

100 / Tr

1287.48mMD(1048.6mTVD)  
45.31°inc 12.07°az

1296.77mMD(1067.2mTVD)  
45.69°inc 10.91°az

1326.04mMD(1087.5mTVD)  
46.20°inc 10.91°az

100 / Tr

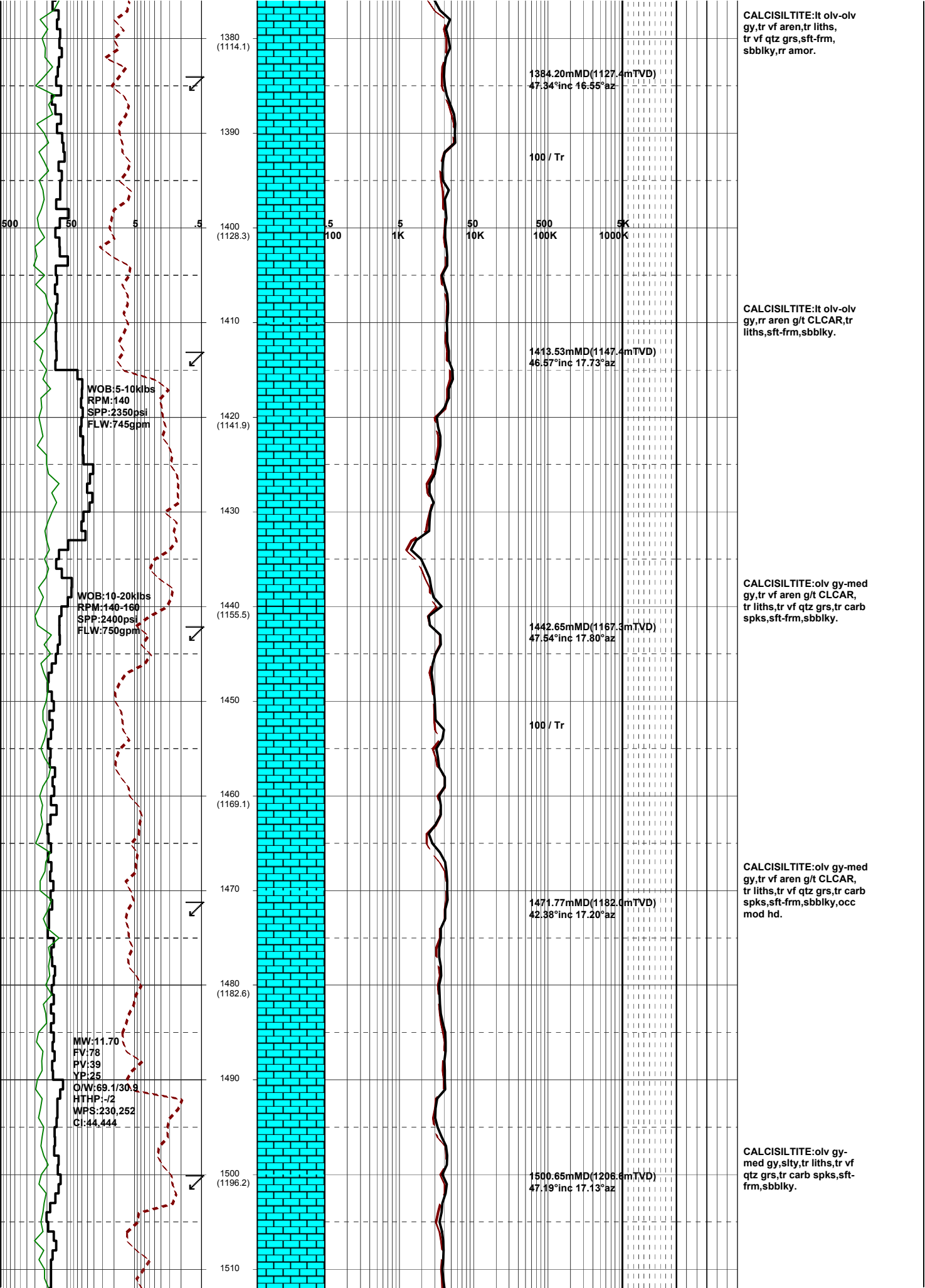
1354.84mMD(1107.4mTVD)  
46.64°inc 14.04°az

CALCISILTITE: It olv-olv gy, tr vf aren g/t CLCAR, tr liths, tr vf qtz grs, frm-mod hd, sbbiky-blky.

CALCISILTITE: It olv-olv gy, tr vf aren g/t CLCAR, tr liths, tr vf qtz grs, frm-mod hd, sbbiky-blky.

CALCISILTITE: It olv-olv gy, tr vf aren g/t CLCAR, tr liths, tr vf qtz grs, frm-mod hd, sbbiky-blky.

CALCISILTITE: It olv-olv gy, tr vf aren, tr liths, sbbiky, rr amor.



1380  
(1114.1)

1384.20mMD(1127.4mTVD)  
47.34°inc 16.55°az

CALCISILTITE:lt olv-olv  
gy,tr vf aren,tr liths,  
tr vf qtz grs,sft frm,  
sbbkly,rr amor.

1390

100 / Tr

500  
50

1400  
(1128.3)

5 5 50 500 1000K

CALCISILTITE:lt olv-olv  
gy,rr aren g/t CLCAR,  
tr liths,sft frm,sbbkly.

1410

1413.53mMD(1147.4mTVD)  
46.57°inc 17.73°az

CALCISILTITE:olv gy-med  
gy,tr vf aren g/t CLCAR,  
tr liths,tr vf qtz grs,tr carb  
spks,sft frm,sbbkly.

1420  
(1141.9)

WOB:5-10klbs  
RPM:140  
SPP:2350psi  
FLW:745gpm

1430

1440  
(1155.5)

WOB:10-20klbs  
RPM:140-160  
SPP:2400psi  
FLW:750gpm

1442.65mMD(1167.3mTVD)  
47.54°inc 17.80°az

1450

100 / Tr

1460  
(1169.1)

CALCISILTITE:olv gy-med  
gy,tr vf aren g/t CLCAR,  
tr liths,tr vf qtz grs,tr carb  
spks,sft frm,sbbkly,occ  
mod hd.

1470

1471.77mMD(1182.0mTVD)  
42.38°inc 17.20°az

1480  
(1182.6)

MW:11.70  
FV:78  
PV:39  
YP:25

OW:69.1/30.9  
HTHP:-72  
WPS:230,252  
C:44,444

1490

1500.65mMD(1206.6mTVD)  
47.19°inc 17.13°az

CALCISILTITE:olv gy-  
med gy,silty,tr liths,tr vf  
qtz grs,tr carb spks,sft  
frm,sbbkly.

1500  
(1196.2)

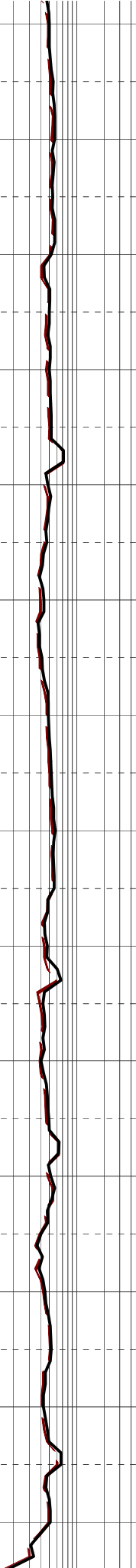
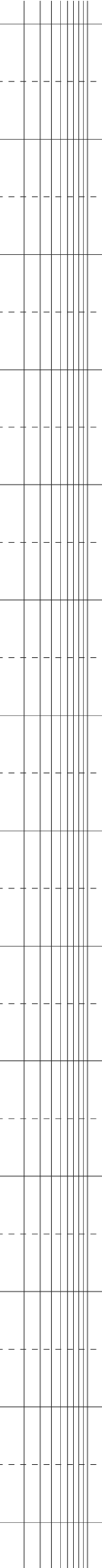
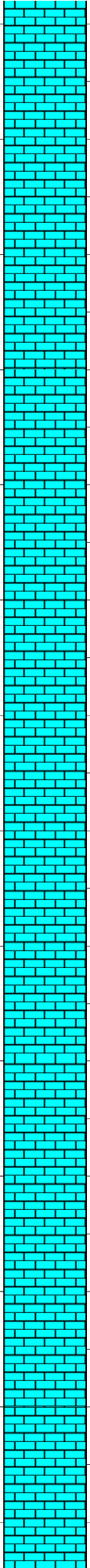
1510





SPP:2500psi  
FLW:750gpm

1650  
1660 (1305)  
1670  
1680 (1318.6)  
1690  
1700 (1332.1)  
1710  
1720 (1345.7)  
1730  
1740 (1359.2)  
1750  
1760 (1372.7)  
1770  
1780 (1386.2)



1675.81mMD(1325.7mTVD)  
47.46°inc 13.18°az

100 / Tr / Tr

1705.09mMD(1345.5mTVD)  
47.36°inc 14.17°az

1734.49mMD(1365.4mTVD)  
47.35°inc 15.52°az

100 / Tr / Tr

1763.88mMD(1385.3mTVD)  
47.80°inc 16.71°az

100 / Tr

WOB:10-20kibs  
RPM:160-165  
SPP:2500psi  
FLW:745gpm

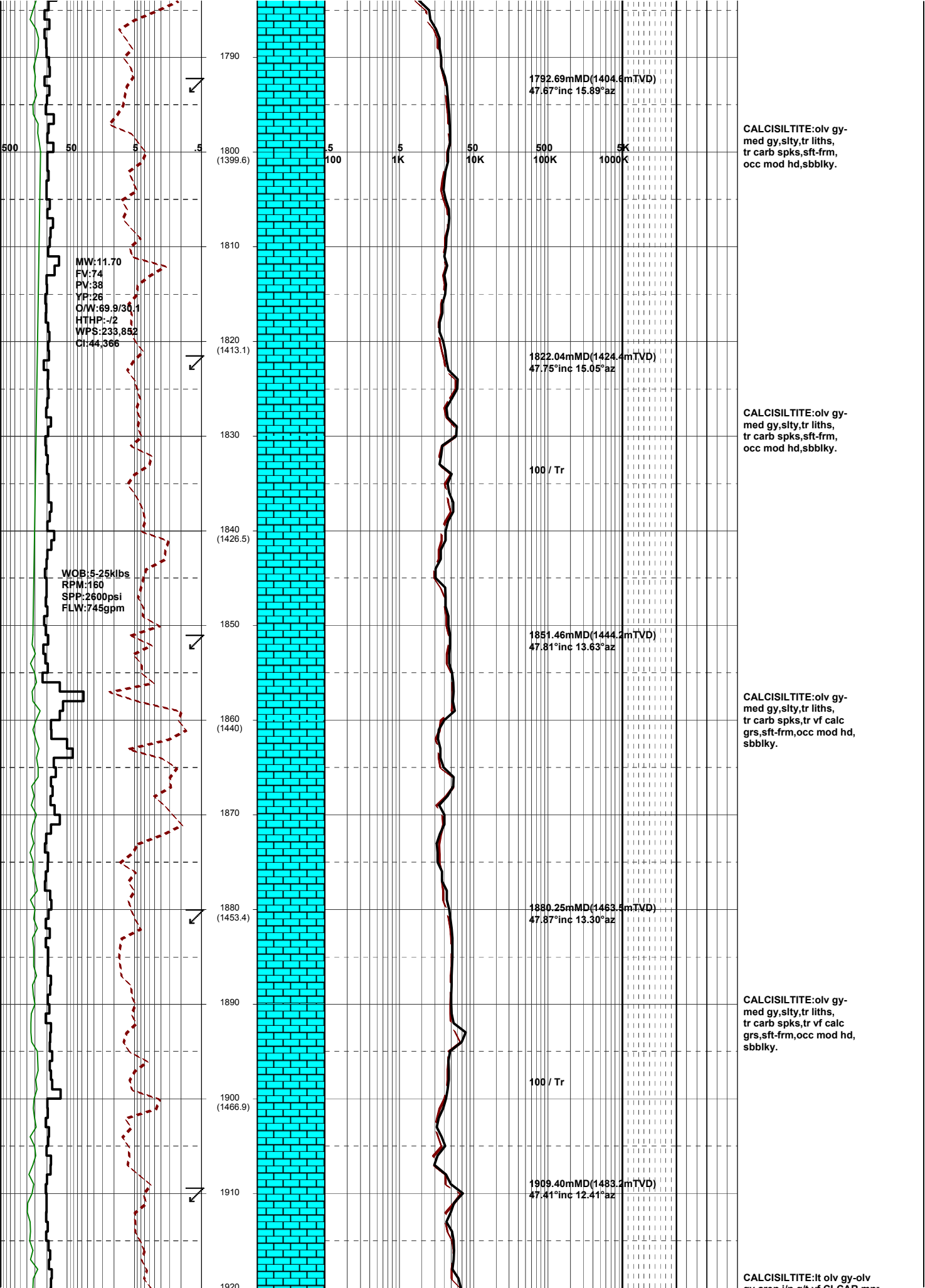
med gy,occ lt gy,silty,tr  
liths,tr vf qtz grs,tr carb  
spks,tr foss frags,sft-frm,  
occ mod hd,sbbiky-blky.

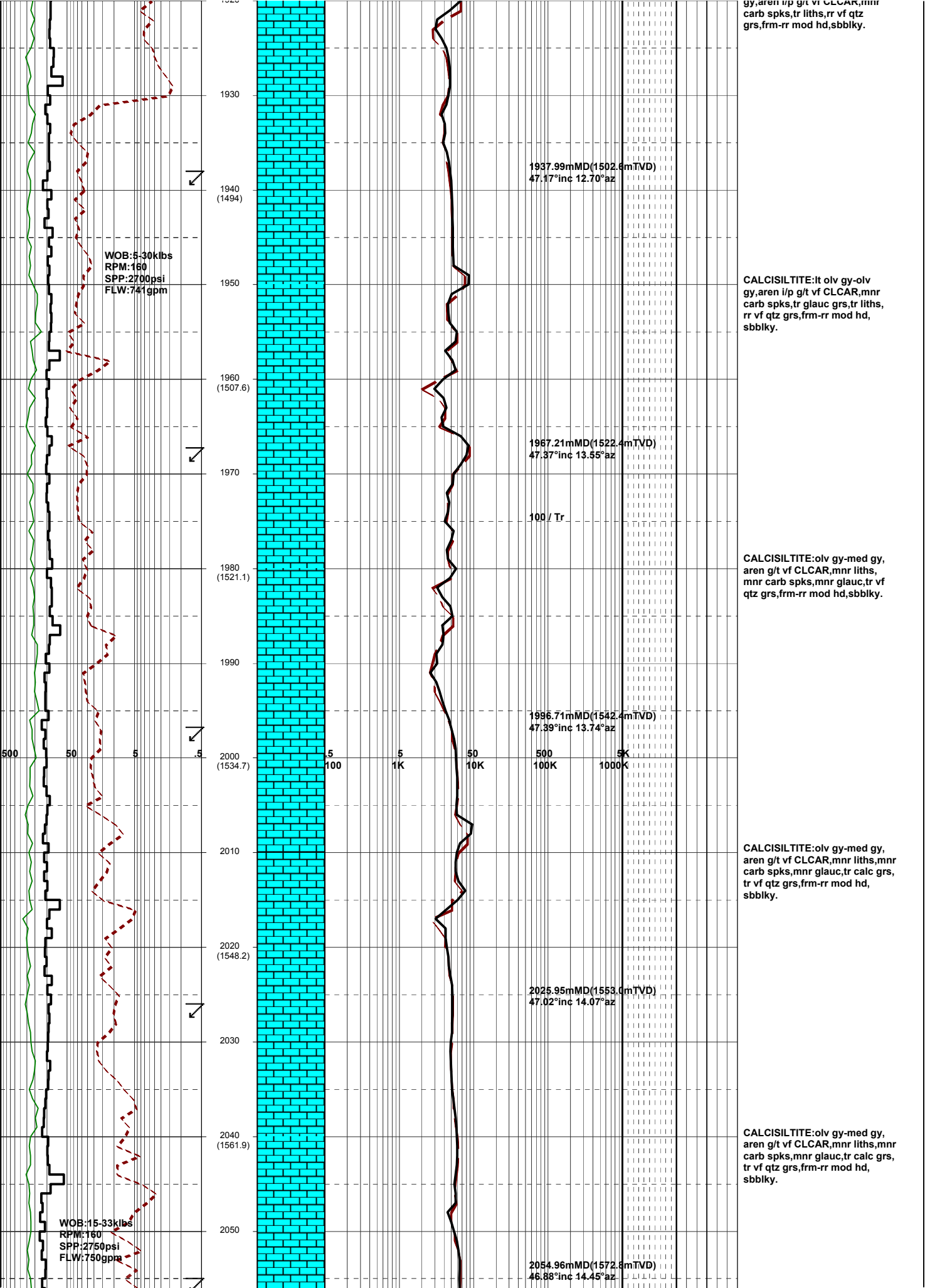
CALCISILTITE:olv gy-  
med gy,silty,tr liths,tr carb  
spks,frm-mod hd,sbbiky.

CALCISILTITE:olv gy-  
med gy,aren g/t CLCLT,  
tr liths,tr carb spks,sft-frm,  
occ mod hd,sbbiky-blky.

CALCISILTITE:olv gy-  
med gy,aren g/t CLCLT,  
tr liths,tr carb spks,sft-frm,  
occ mod hd,sbbiky-blky.

CALCISILTITE:olv gy-  
med gy,rr aren,tr liths,  
tr carb spks,frm-mod hd,  
sbbiky.





WOB:5-30klbs  
RPM:160  
SPP:2700psi  
FLW:741gpm

1937.99mMD(1502.6mTVD)  
47.17°inc 12.70°az

gy,aren i/p g/t vf CLCAR,mnr carb spks,tr liths,rr vf qtz grs,frm-rr mod hd,sbbkly.

CALCISILTITE:It olv gy-olv gy,aren i/p g/t vf CLCAR,mnr carb spks,tr glauc grs,tr liths,rr vf qtz grs,frm-rr mod hd, sbbkly.

1967.21mMD(1522.4mTVD)  
47.37°inc 13.55°az

100 / Tr

CALCISILTITE:olv gy-med gy, aren g/t vf CLCAR,mnr liths, mnr carb spks,mnr glauc,tr vf qtz grs,frm-rr mod hd,sbbkly.

1996.71mMD(1542.4mTVD)  
47.39°inc 13.74°az

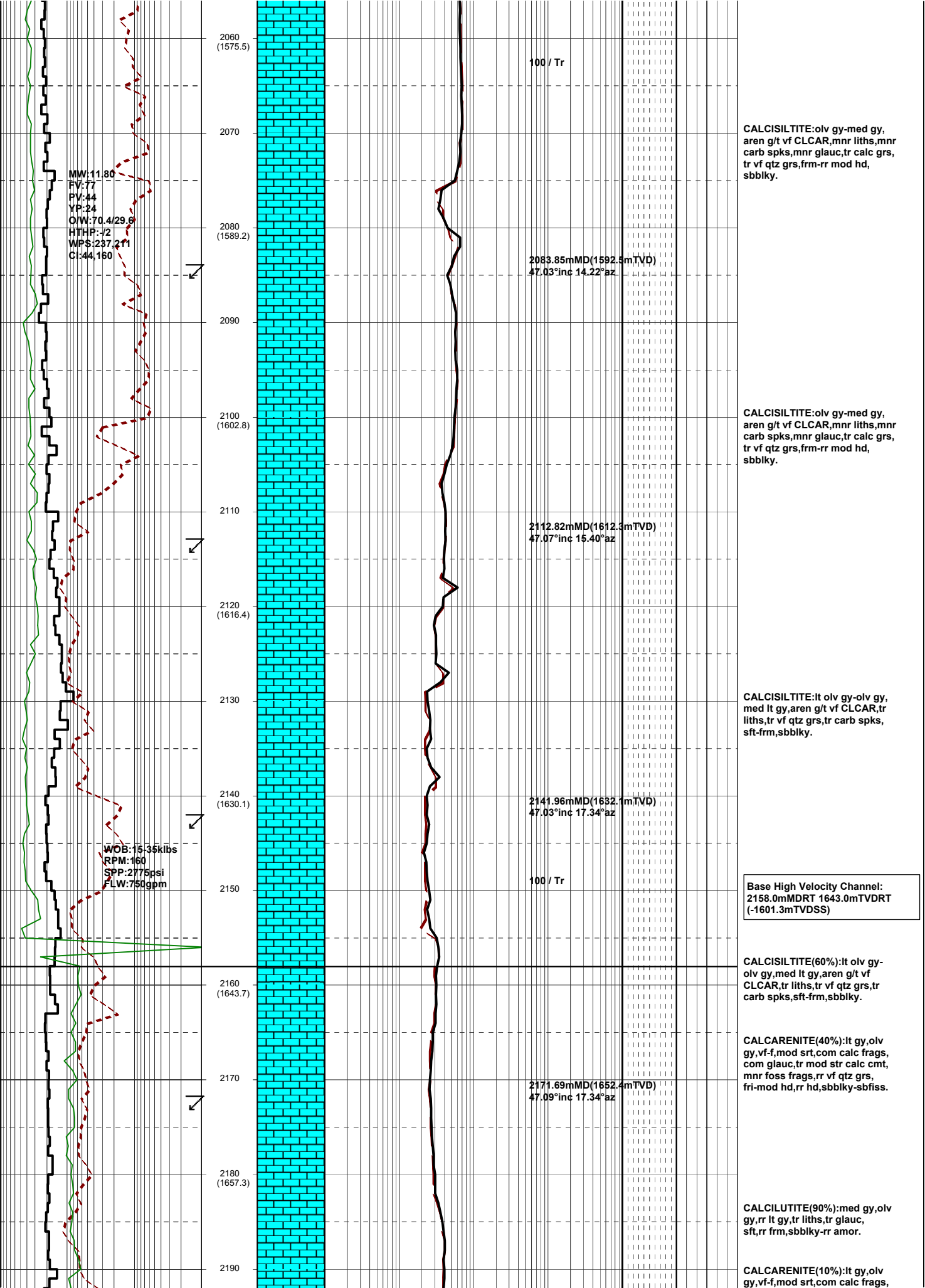
CALCISILTITE:olv gy-med gy, aren g/t vf CLCAR,mnr liths,mnr carb spks,mnr glauc,tr calc grs, tr vf qtz grs,frm-rr mod hd, sbbkly.

2025.95mMD(1553.0mTVD)  
47.02°inc 14.07°az

CALCISILTITE:olv gy-med gy, aren g/t vf CLCAR,mnr liths,mnr carb spks,mnr glauc,tr calc grs, tr vf qtz grs,frm-rr mod hd, sbbkly.

2054.96mMD(1572.8mTVD)  
46.88°inc 14.45°az

WOB:15-33klbs  
RPM:160  
SPP:2750psi  
FLW:750gpm



MW:11.80  
 PV:77  
 PY:44  
 YP:24  
 O/W:70.4/29.6  
 HTHP:-72  
 WPS:237.211  
 C:44,160

WOB:15-35kilbs  
 RPM:160  
 SPP:2775psi  
 FLW:750gpm

100 / Tr

2083.85mMD(1592.5mTVD)  
 47.03°inc 14.22°az

2112.82mMD(1612.3mTVD)  
 47.07°inc 15.40°az

2141.96mMD(1632.1mTVD)  
 47.03°inc 17.34°az

100 / Tr

2171.69mMD(1652.4mTVD)  
 47.09°inc 17.34°az

CALCISILTITE:olv gy-med gy, aren g/t vf CLCAR,mnr liths,mnr carb spks,mnr glauc,tr calc grs, tr vf qtz grs,frm-rr mod hd, sbbkly.

CALCISILTITE:olv gy-med gy, aren g/t vf CLCAR,mnr liths,mnr carb spks,mnr glauc,tr calc grs, tr vf qtz grs,frm-rr mod hd, sbbkly.

CALCISILTITE:lt olv gy-olv gy, med lt gy,aren g/t vf CLCAR,tr liths,tr vf qtz grs,tr carb spks, sft-frm,sbbkly.

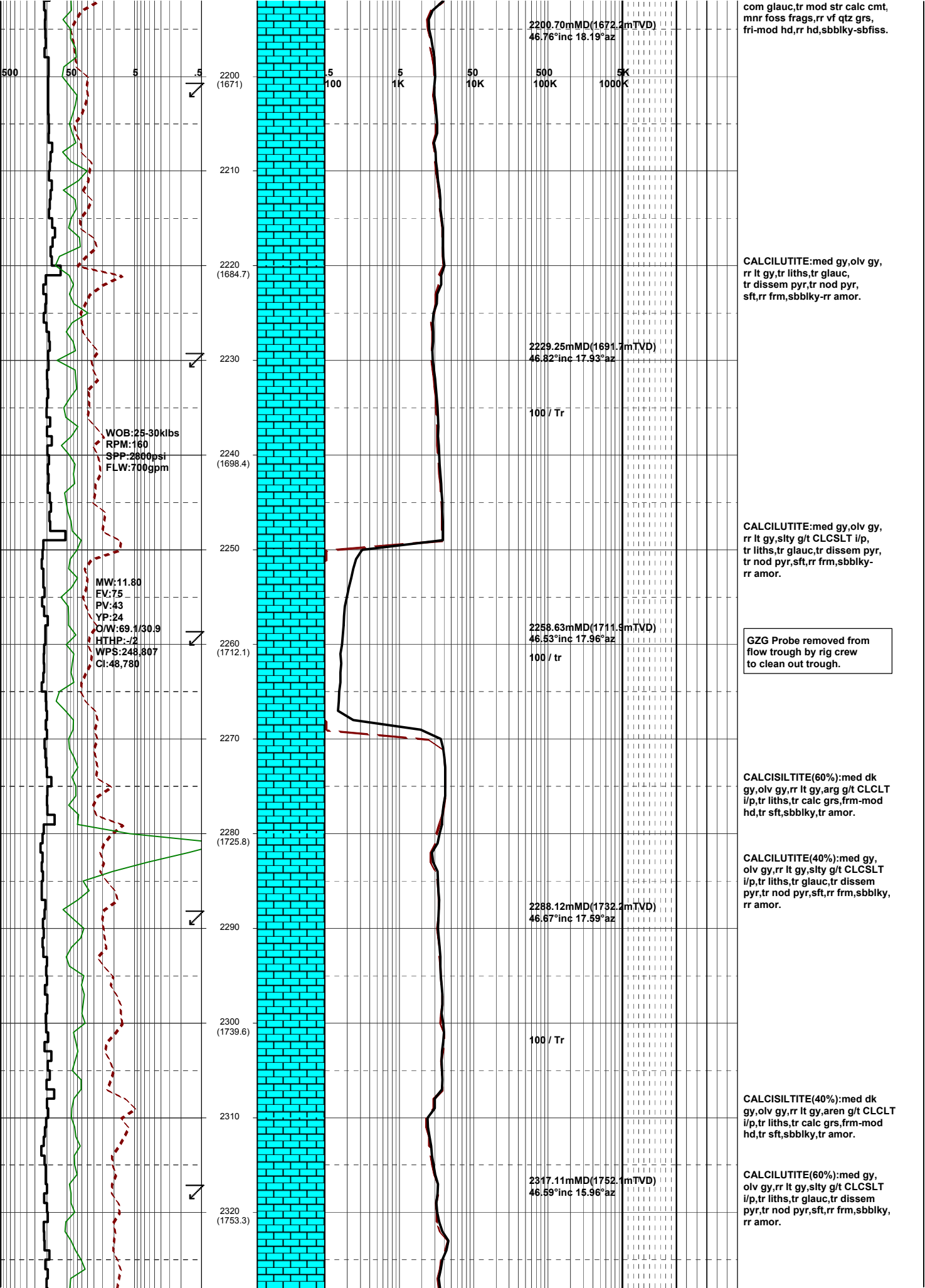
Base High Velocity Channel:  
 2158.0mMDRT 1643.0mTVDRT  
 (-1601.3mTVDS)

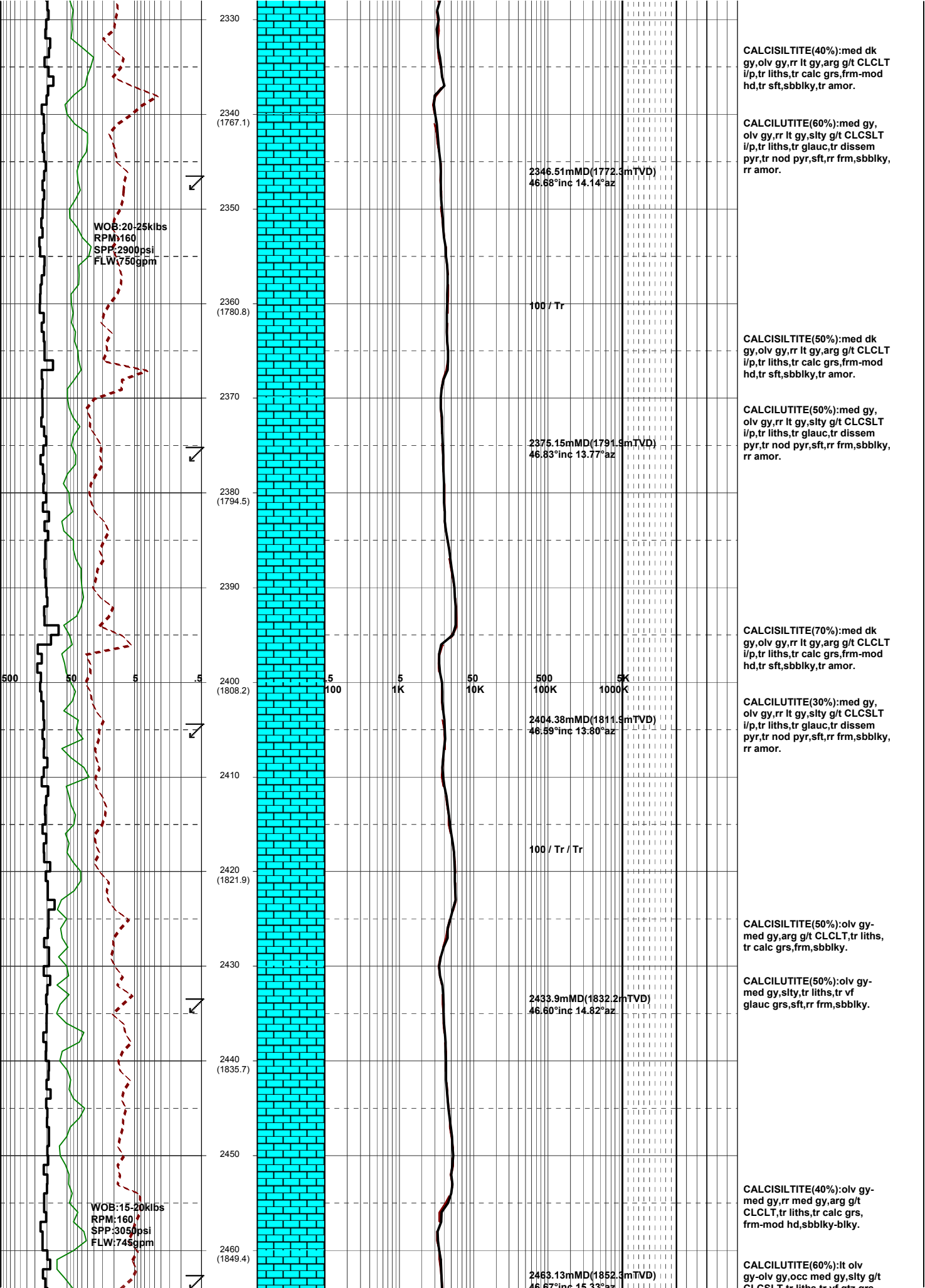
CALCISILTITE(60%):lt olv gy-olv gy,med lt gy,aren g/t vf CLCAR,tr liths,tr vf qtz grs,tr carb spks,sft-frm,sbbkly.

CALCARENITE(40%):lt gy,olv gy,vf-f,mod srt,com calc frags, com glauc,tr mod str calc cmt, mnr foss frags,rr vf qtz grs, fri-mod hd,rr hd,sbbkly-sbflss.

CALCILUTITE(90%):med gy,olv gy,rr lt gy,tr liths,tr glauc, sft,rr frm,sbbkly-rr amor.

CALCARENITE(10%):lt gy,olv gy,vf-f,mod srt,com calc frags,





2330  
 CALCISILTITE(40%):med dk gy,olv gy,rr lt gy,arg g/t CLCLT i/p,tr liths,tr calc grs,frm-mod hd,tr sft,sbbiky,tr amor.

2340 (1767.1)  
 CALCILUTITE(60%):med gy, olv gy,rr lt gy,sity g/t CLCSLT i/p,tr liths,tr glauc,tr dissem pyr,tr nod pyr,sft,rr frm,sbbiky, rr amor.

2346.51mMD(1772.3mTVD)  
 46.68°inc 14.14°az

WOB:20-25kibs  
 RPM:160  
 SPP:2900psi  
 FLW:750gpm

2360 (1780.8)  
 CALCISILTITE(50%):med dk gy,olv gy,rr lt gy,arg g/t CLCLT i/p,tr liths,tr calc grs,frm-mod hd,tr sft,sbbiky,tr amor.

100 / Tr

2370  
 CALCILUTITE(50%):med gy, olv gy,rr lt gy,sity g/t CLCSLT i/p,tr liths,tr glauc,tr dissem pyr,tr nod pyr,sft,rr frm,sbbiky, rr amor.

2375.15mMD(1791.5mTVD)  
 46.83°inc 13.77°az

2390  
 CALCISILTITE(70%):med dk gy,olv gy,rr lt gy,arg g/t CLCLT i/p,tr liths,tr calc grs,frm-mod hd,tr sft,sbbiky,tr amor.

2400 (1808.2) 500 50 5 .5 .5 5 50 500 5K

2400  
 CALCILUTITE(30%):med gy, olv gy,rr lt gy,sity g/t CLCSLT i/p,tr liths,tr glauc,tr dissem pyr,tr nod pyr,sft,rr frm,sbbiky, rr amor.

2404.38mMD(1811.5mTVD)  
 46.59°inc 13.80°az

2420 (1821.9)  
 CALCISILTITE(50%):olv gy-med gy,arg g/t CLCLT,tr liths, tr calc grs,frm,sbbiky.

100 / Tr / Tr

2430  
 CALCILUTITE(50%):olv gy-med gy,sity,tr liths,tr vf glauc grs,sft,rr frm,sbbiky.

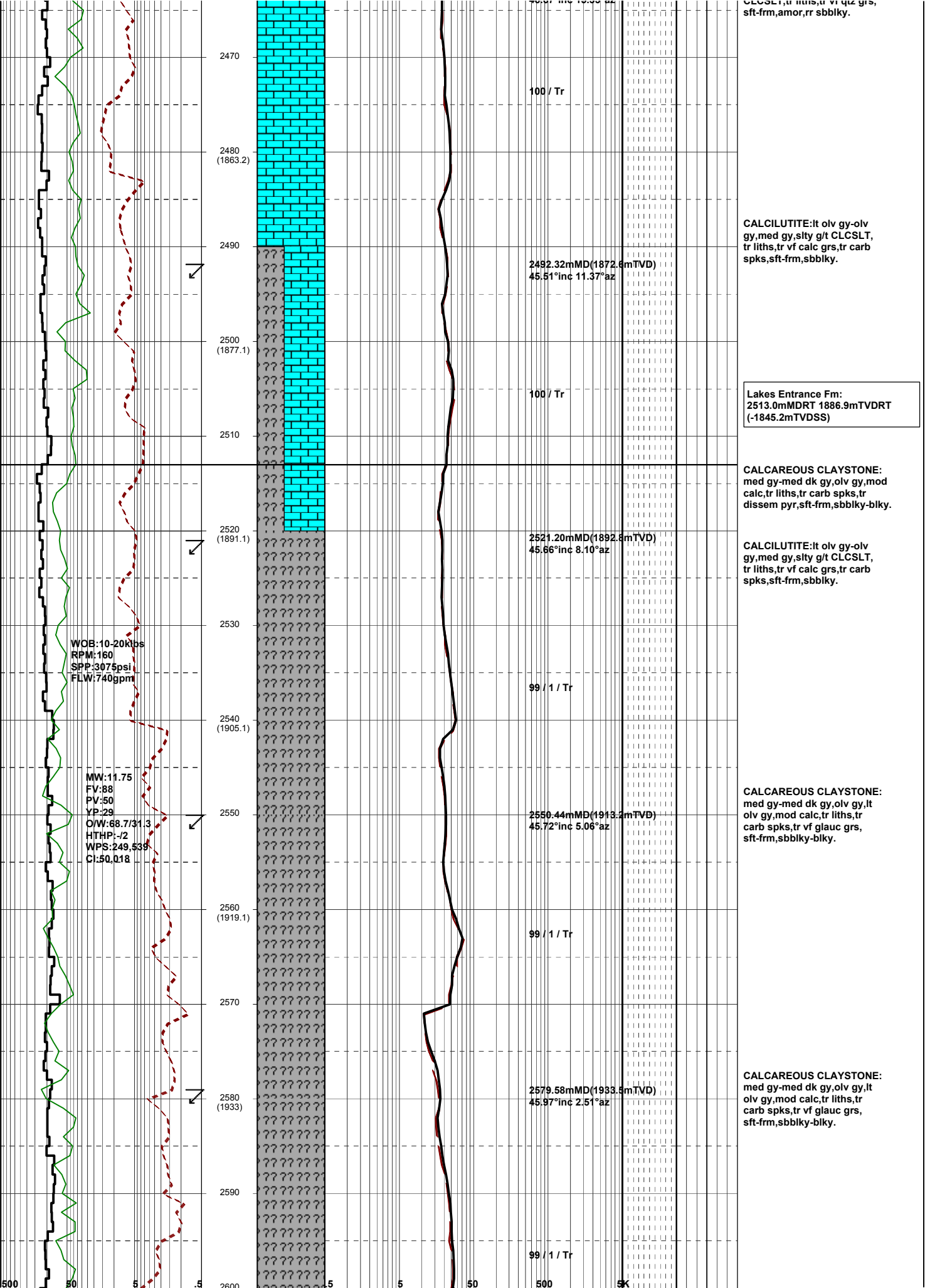
2433.9mMD(1832.2mTVD)  
 46.60°inc 14.82°az

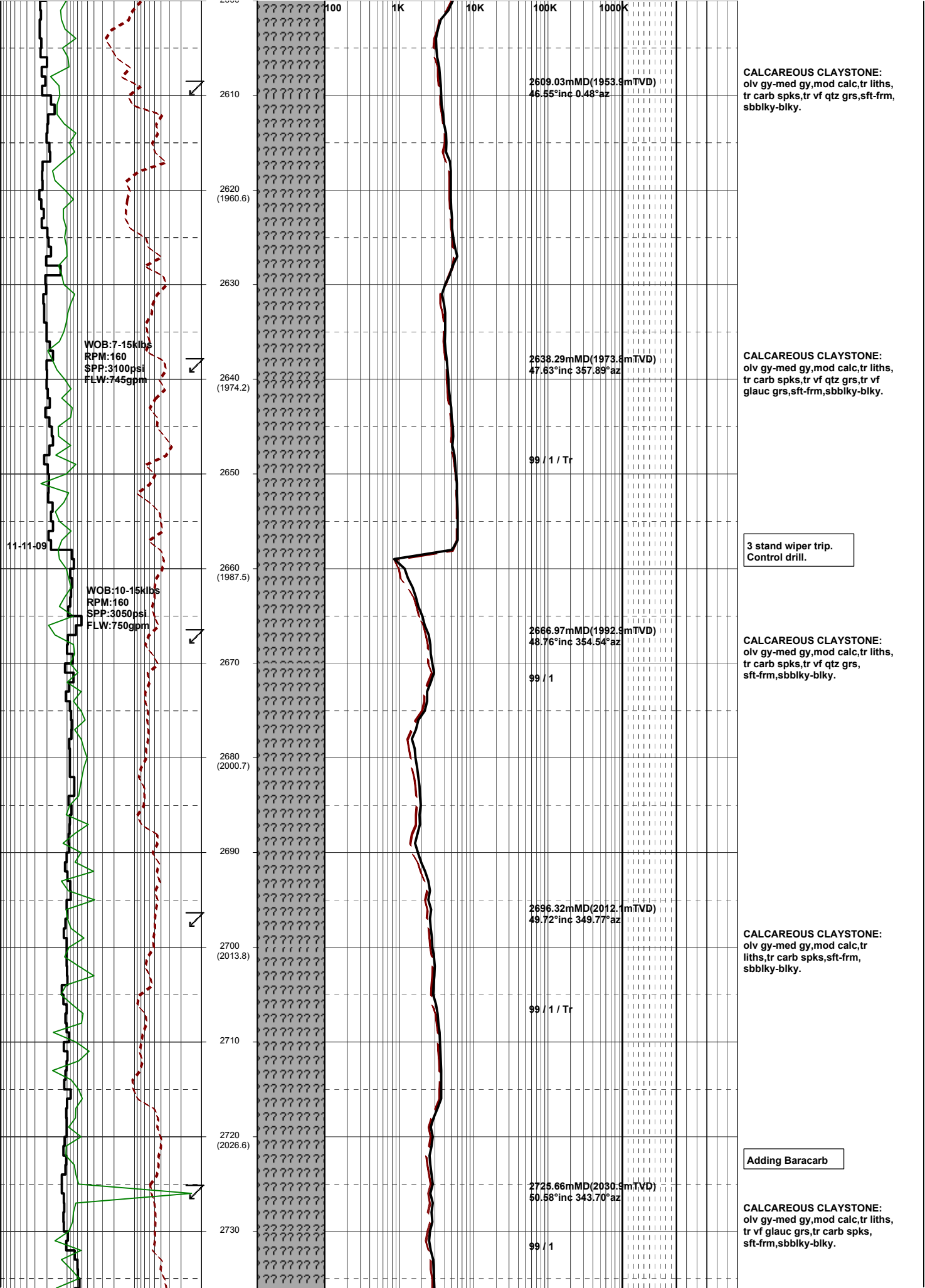
2450  
 CALCISILTITE(40%):olv gy-med gy,rr med gy,arg g/t CLCLT,tr liths,tr calc grs, frm-mod hd,sbbiky-blky.

WOB:15-20kibs  
 RPM:160  
 SPP:3050psi  
 FLW:745gpm

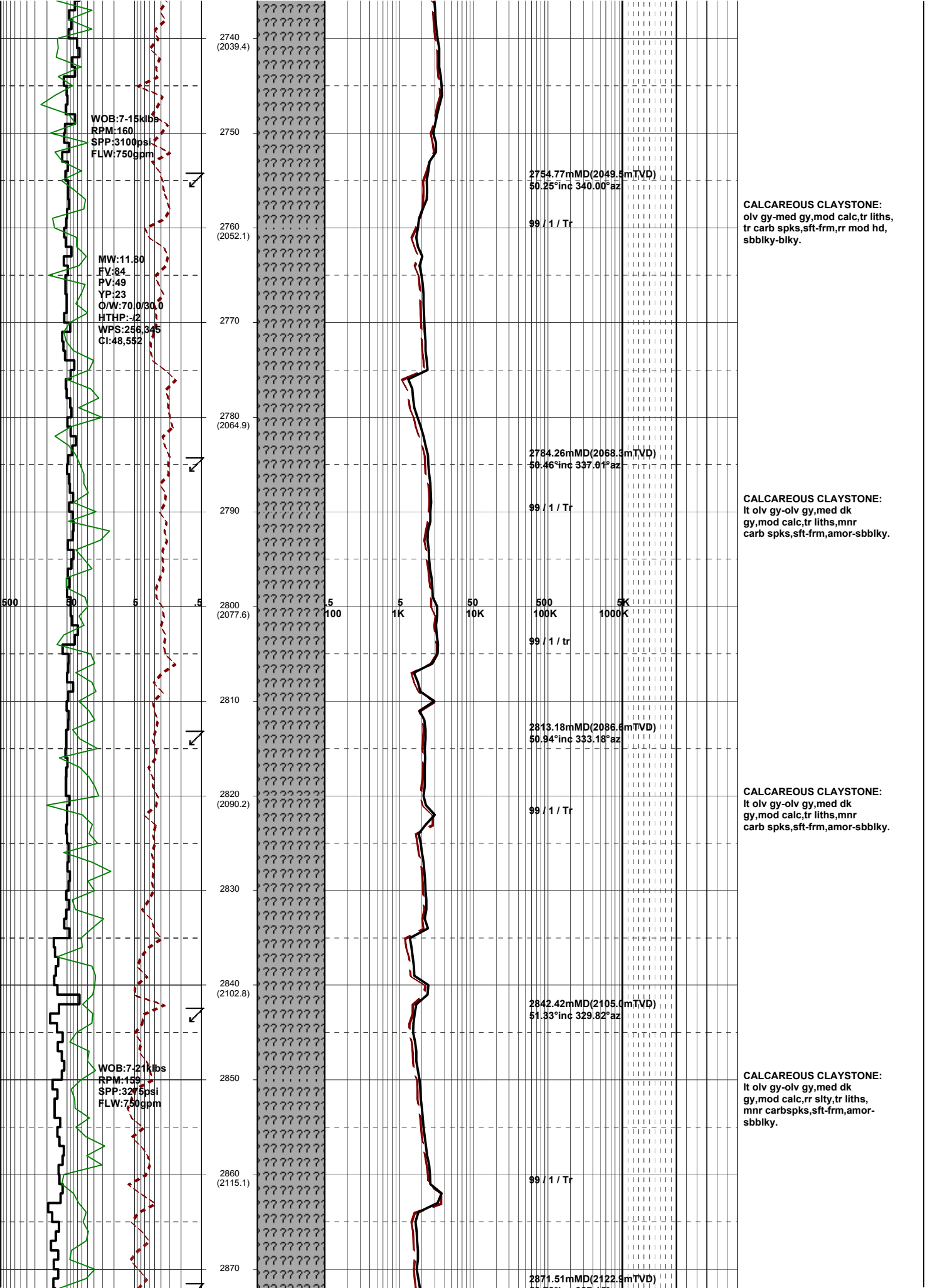
2460 (1849.4)  
 CALCILUTITE(60%):lt olv gy-olv gy,occ med gy,sity g/t CLCSLT i/p,tr liths,tr vf sft,gr

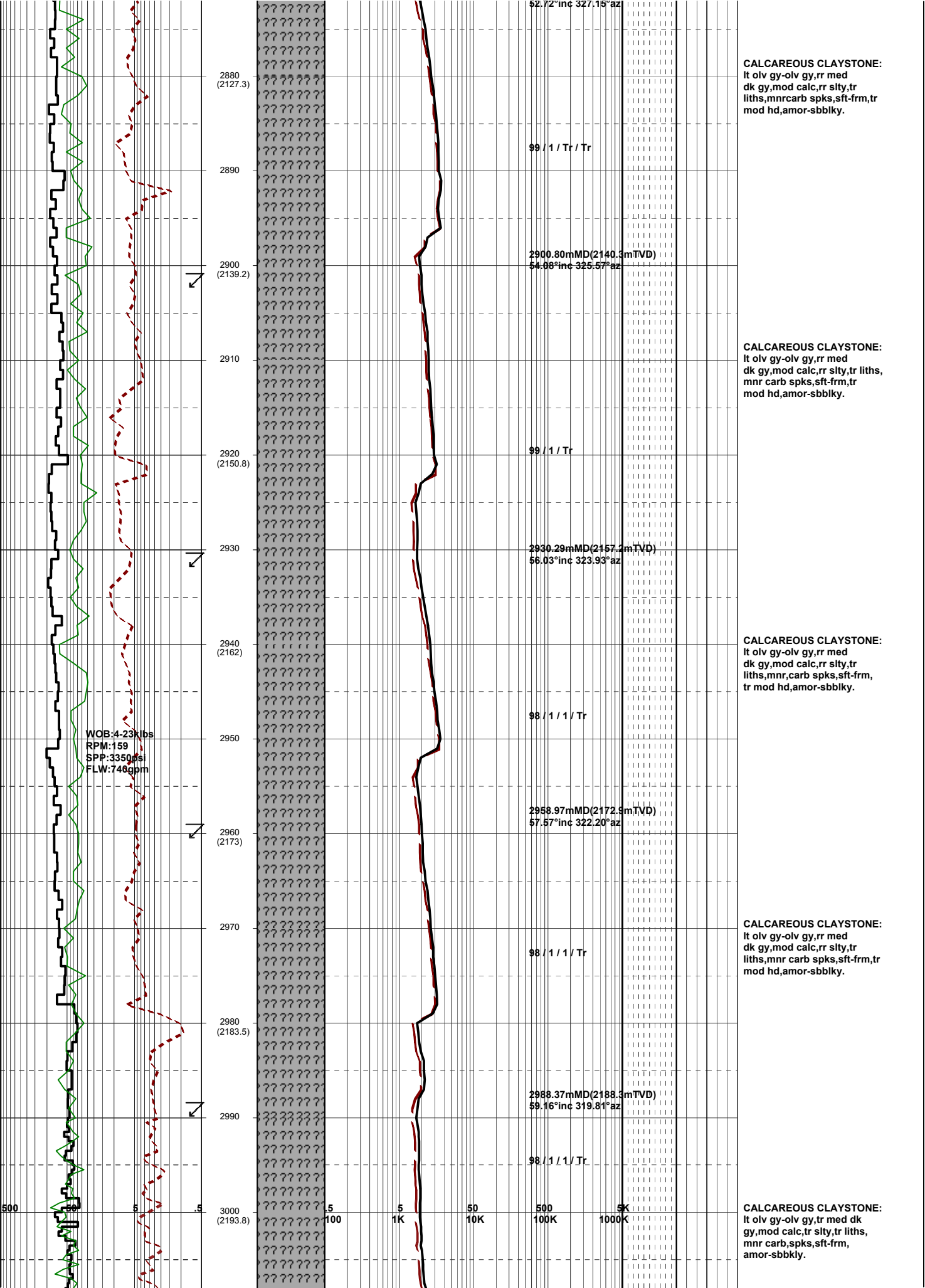
2463.13mMD(1852.3mTVD)  
 46.67°inc 15.13°az

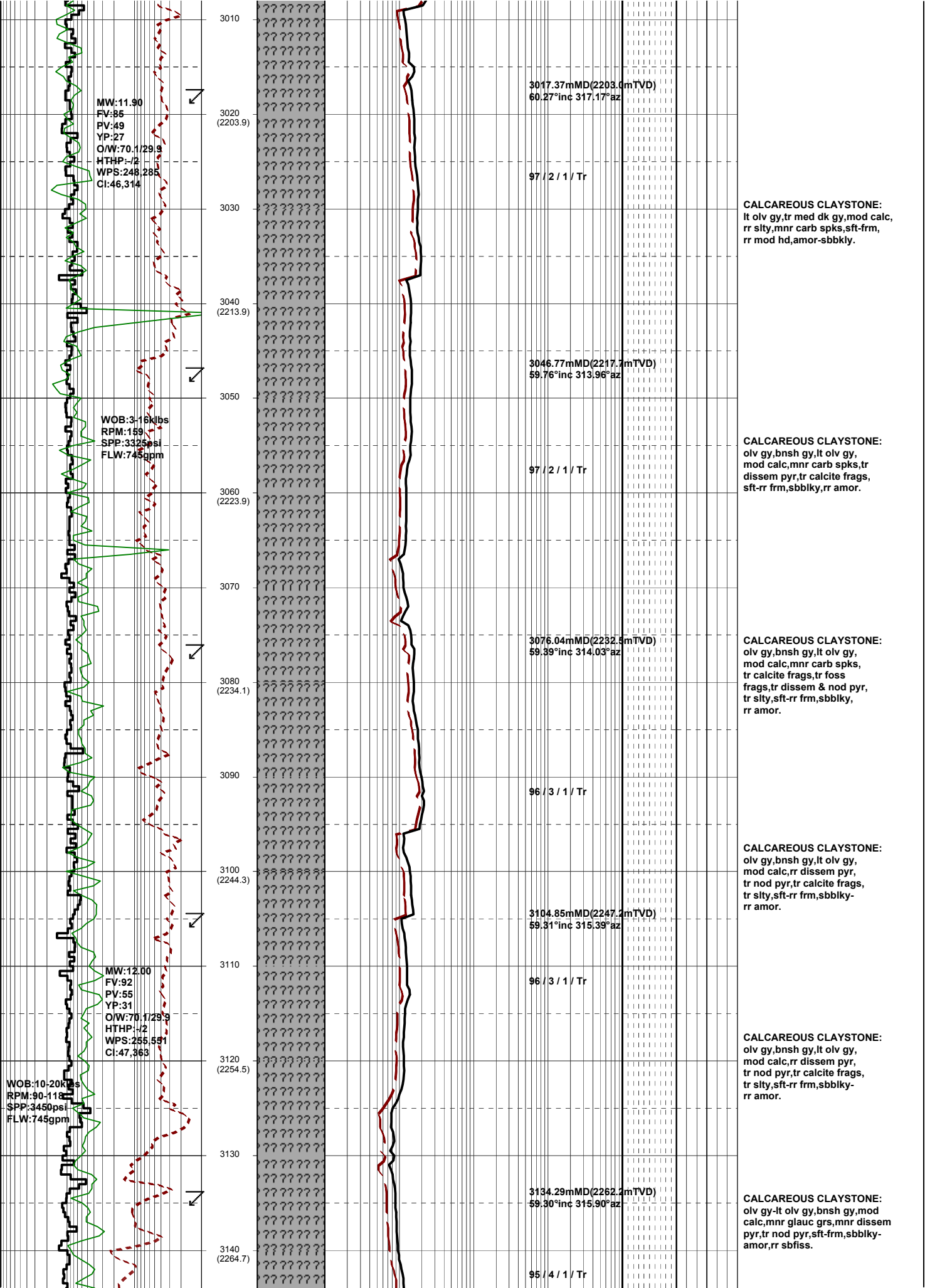


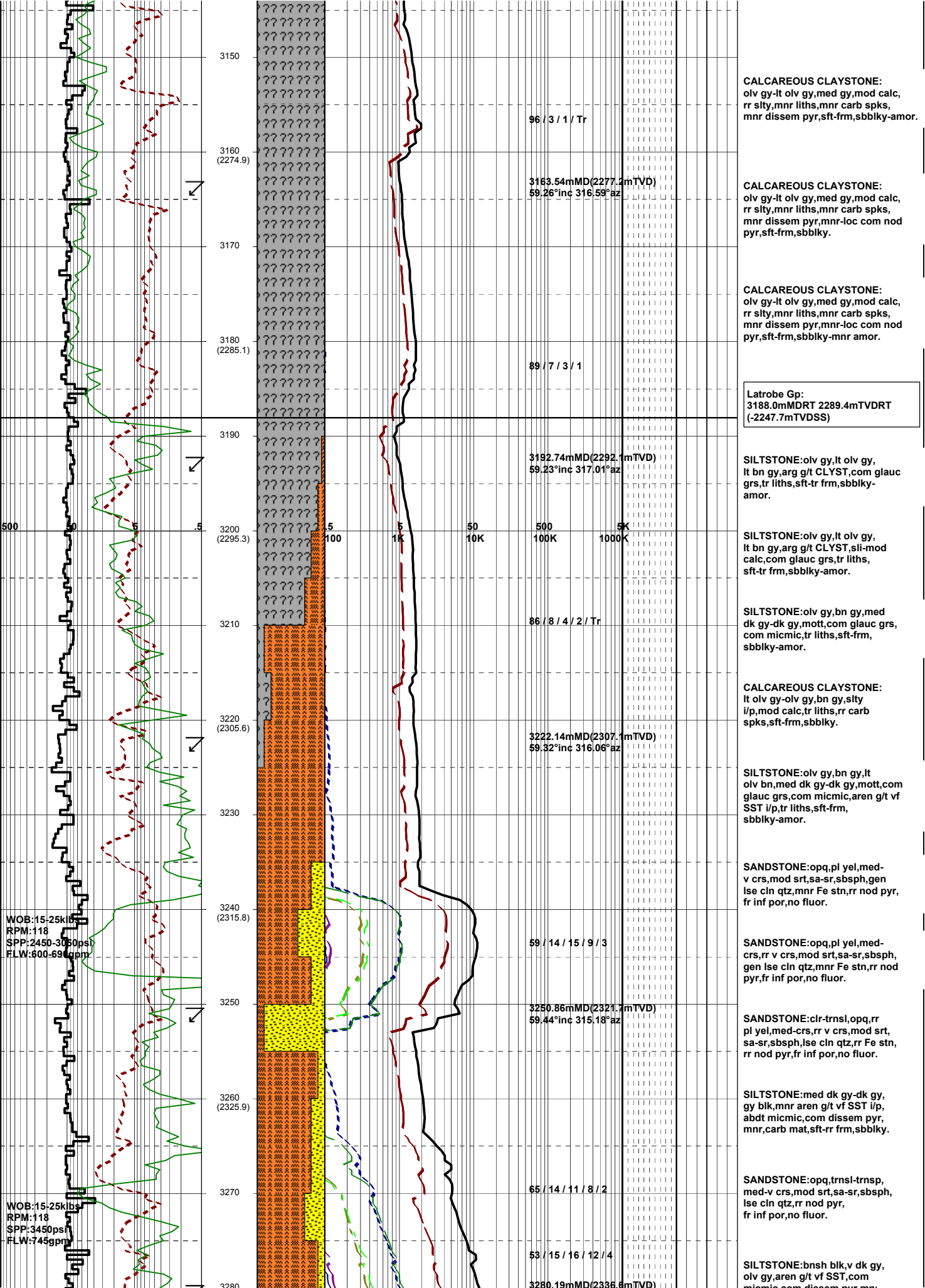


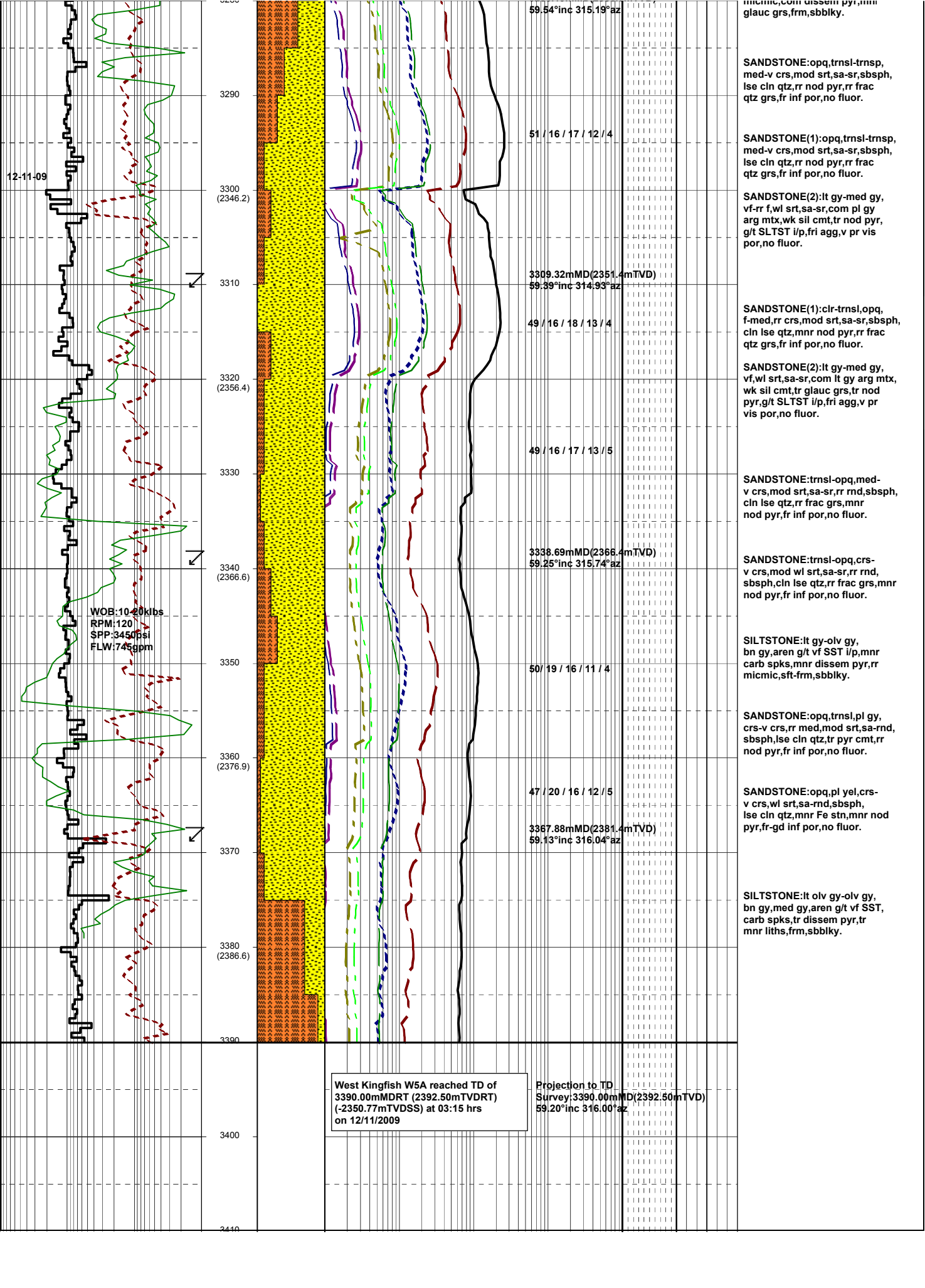












12-11-09

WOB: 10-20 kbps  
RPM: 120  
SPP: 3450 psi  
FLW: 745 gpm

3290  
3300 (2346.2)  
3310  
3320 (2356.4)  
3330  
3340 (2366.6)  
3350  
3360 (2376.9)  
3370  
3380 (2386.6)  
3390

59.54°inc 315.19°az  
51 / 16 / 17 / 12 / 4  
3309.32mMD(2351.4mTVD)  
59.39°inc 314.93°az  
49 / 16 / 18 / 13 / 4  
49 / 16 / 17 / 13 / 5  
3338.69mMD(2365.4mTVD)  
59.25°inc 315.74°az  
50 / 19 / 16 / 11 / 4  
47 / 20 / 16 / 12 / 5  
3387.88mMD(2381.4mTVD)  
59.13°inc 316.04°az

micmic,com ussem pyr,mn glauc grs,frm,sbbiky.

SANDSTONE:opq,trnsl-trnsp, med-v crs,mod srt,sa-sr,sbsph, lse clin qtz,rr nod pyr,rr frac qtz grs,fr inf por,no fluor.

SANDSTONE(1):opq,trnsl-trnsp, med-v crs,mod srt,sa-sr,sbsph, lse clin qtz,rr nod pyr,rr frac qtz grs,fr inf por,no fluor.

SANDSTONE(2):lt gy-med gy, vf-rr f,wl srt,sa-sr,com pl gy arg mtx,wk sil cmt,tr nod pyr, g/t SLTST l/p,fri agg,v pr vis por,no fluor.

SANDSTONE(1):clr-trnsl,opq, f-med,rr crs,mod srt,sa-sr,sbsph, clin lse qtz,mnr nod pyr,rr frac qtz grs,fr inf por,no fluor.

SANDSTONE(2):lt gy-med gy, vf,wl srt,sa-sr,com lt gy arg mtx, wk sil cmt,tr glauc grs,tr nod pyr,g/t SLTST l/p,fri agg,v pr vis por,no fluor.

SANDSTONE:trnsl-opq,med-v crs,mod srt,sa-sr,rr rnd,sbsph, clin lse qtz,rr frac grs,mnr nod pyr,fr inf por,no fluor.

SANDSTONE:trnsl-opq,crs-v crs,mod wl srt,sa-sr,rr rnd, sbsph,clin lse qtz,rr frac grs,mnr nod pyr,fr inf por,no fluor.

SILTSTONE:lt gy-olv gy, bn gy,aren g/t vf SST l/p,mnr carb spks,mnr dissem pyr,rr micmic,sft-frm,sbbiky.

SANDSTONE:opq,trnsl,pl gy, crs-v crs,rr med,mod srt,sa-rnd, sbsph,lse clin qtz,tr pyr cmt,rr nod pyr,fr inf por,no fluor.

SANDSTONE:opq,pl yel,crs-v crs,wl srt,sa-rnd,sbsph, lse clin qtz,mnr Fe stn,mnr nod pyr,fr-gd inf por,no fluor.

SILTSTONE:lt olv gy-olv gy, bn gy,med gy,aren g/t vf SST, carb spks,tr dissem pyr,tr mnr liths,frm,sbbiky.

West Kingfish W5A reached TD of 3390.00mMDRT (2392.50mTVDRT) (-2350.77mTVDSS) at 03:15 hrs on 12/11/2009

Projection to TD Survey:3390.00mMD(2392.50mTVD) 59.20°inc 316.00°az

3400  
3410